



## KEY FACTS

<b>Product</b>	Timber framed houses, Roof trusses
<b>Turnover</b>	13,2 M EUR in 2018
<b>Employees</b>	170
<b>Export</b>	Scandinavia, UK, Iceland and more
<b>Factory</b>	5000m <sup>2</sup>
<b>Production</b>	113 houses/year (23600 m <sup>2</sup> floor area)



**LISKANDAS** is Norwegian - Lithuanian offsite timber frame house manufacturing company based in Lithuania since 1997. We manufacture **bespoke design** houses according to Scandinavian technology.



## MAIN ADVANTAGES

### Sustainability, ecology

Timber frame housing is one of the most sustainable and eco-friendly construction methods available. **Timber** is an organic, non-toxic and naturally renewable building material. Trees soak up carbon dioxide within their core and keep it locked inside.

### Economy, quality and speed

Offsite timber frame building system ensures a significantly faster construction period minimizing overall construction time and costs. All materials we use are **certified** and **strength graded**.

### Flexibility

Timber allows unique design creations. We specialise in **individual, bespoke design** housing of various sizes ( **15 m<sup>2</sup> – 10 00 m<sup>2</sup>** ), also are willing to develop catalogue houses together with partners.



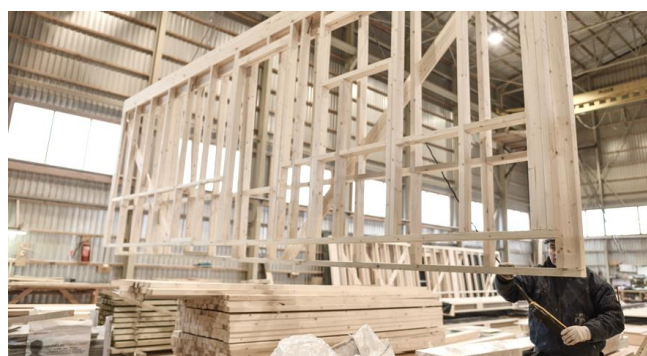


## MANUFACTURING TIME

The manufacturing time of a **200 m<sup>2</sup>** timber element house in the factory takes about **1 month**. The whole building process from signing the contract to finished assembled

**200 m<sup>2</sup>** house on site is no longer than **one season**.

For smaller houses production and building process will be shorter, for larger buildings - longer.



## BUILDING PROCESS

Frame houses are assembled from pre-manufactured open panels. Windows are installed in the wall panels in the factory.

Liskandas provides outer finishing. Interior is open for engineering service installation on site.

The manufactured set is then transported to the building site and is **assembled on the foundation in 3 days** on average. The windows and doors are easily and quickly mounted after.







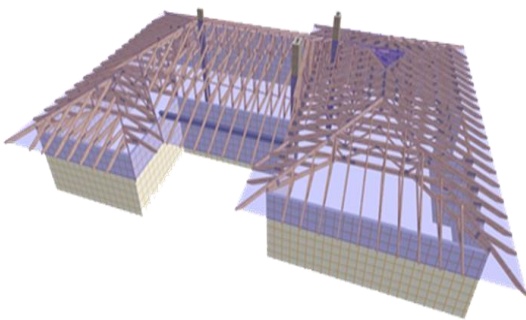
## ROOF TRUSSES

Our wooden roof trusses are designed using the industry leading design and engineering software created by **Mitek**. We are **CE certificate** holders and monitored by well known British certification company **BM Trada**.



When compared with a traditionally built roof, trussed rafters will typically deliver considerable material **savings often using 40% less timber**.

The importance of **minimizing site waste** has never been greater. Trussed rafters are manufactured offsite, in a factory controlled environment **ensuring high quality products** are delivered to site with a minimum of onsite work required.



A trussed roof is a fully engineered structure delivering a **practical, versatile, cost effective** and **speedy** roofing solution.



**CONTACTS**

Phone No.: +370 698 58 688  
Email: [roof@hus.lt](mailto:roof@hus.lt)





## OUR TEAM

While hardwork, attention to detail, professional decisions are our skills towards a great project management, we strongly believe in our core emotional values such as friendship, kindness, smiles, happy work atmosphere not only between our team members, but especially with our clients. We want to create sustainable partnerships that are built on honesty and friendship and make hardwork fun! We believe that emotions drive people and people drive performance. Building your own home with us is easy and joyful. Our team is carefully chosen to fit our company values and stays constant. Because we are family, you are too!



**CONTACTS**  
[www.hus.lt](http://www.hus.lt)

Phone No.: +370 46 453286  
Email: [info@liskandas.lt](mailto:info@liskandas.lt)

LISKANDAS  
Gelezinkelio Pylimo g. 4, Gargzdai,  
LT-96120 Klaipėdos r.





## WHERE IS YOUR HOUSE FROM?

**LITHUANIA** – We are proud of our land of woods and lakes.

The culture of Lithuania  
Combines an indigenous  
heritage,  
represented  
By the **unique**  
**Lithuanian language**, with **Nordic cultural**  
aspects and Christian traditions resulting  
from historical ties with Poland.



There is an **oak** in Lithuania that has survived  
The Crusades. The Stelmuze oak is the **oldest**  
**tree in Europe...**



**Lithuania** is considered a high-income **country** by the World Bank.

Our seashores are **famous** for the amber found  
on the shores of the Baltic Sea







## OUR PORTFOLIO

*Scan me*



**CONTACTS**  
[www.hus.lt](http://www.hus.lt)

Phone No.: +370 46 453286  
Email: [info@liskandas.lt](mailto:info@liskandas.lt)

LISKANDAS  
Gelezinkelio Pylimo g. 4, Gargzdai,  
LT-96120 Klaipėdos r.